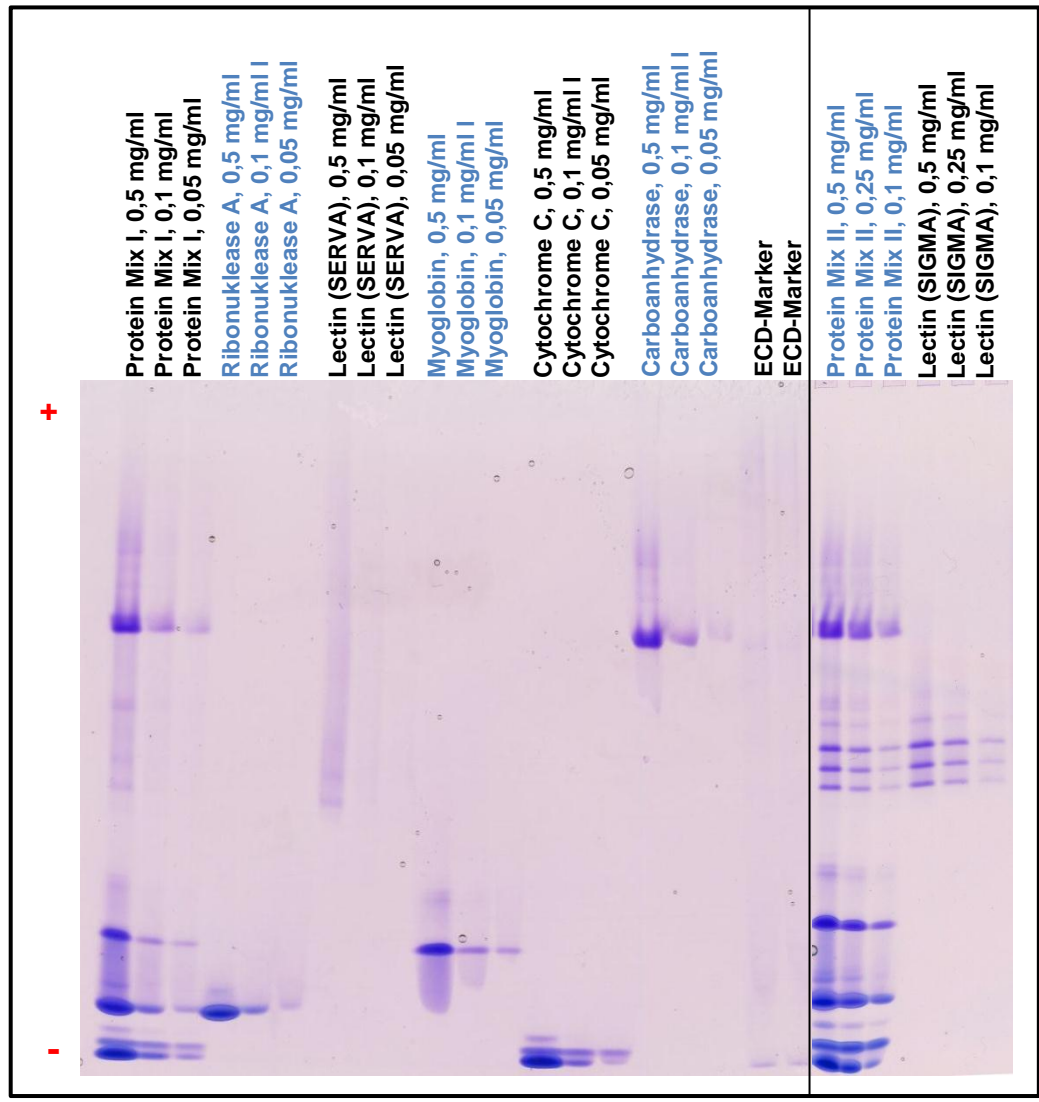


Kathodisch native Elektrophorese mit *Protein Buffer Kit Cathodic* von EDC (Electrophoresis Development & Consulting)

→ **Gelbild**



Protein Mix I (line 1-3) enthält :

- Ribonuklease A (SERVA, 34388, bovine pancreas)
- Lectin (SERVA, 27648, Canavalia ensiformis)**
- Myoglobin (SERVA, 29895, equine)
- Cytochrome C (SIGMA, C3131, bovine heart)
- Carboanhydrase (SIGMA, C7025, bovine erythrocytes)

Protein Mix II (line 21-23) enthält :

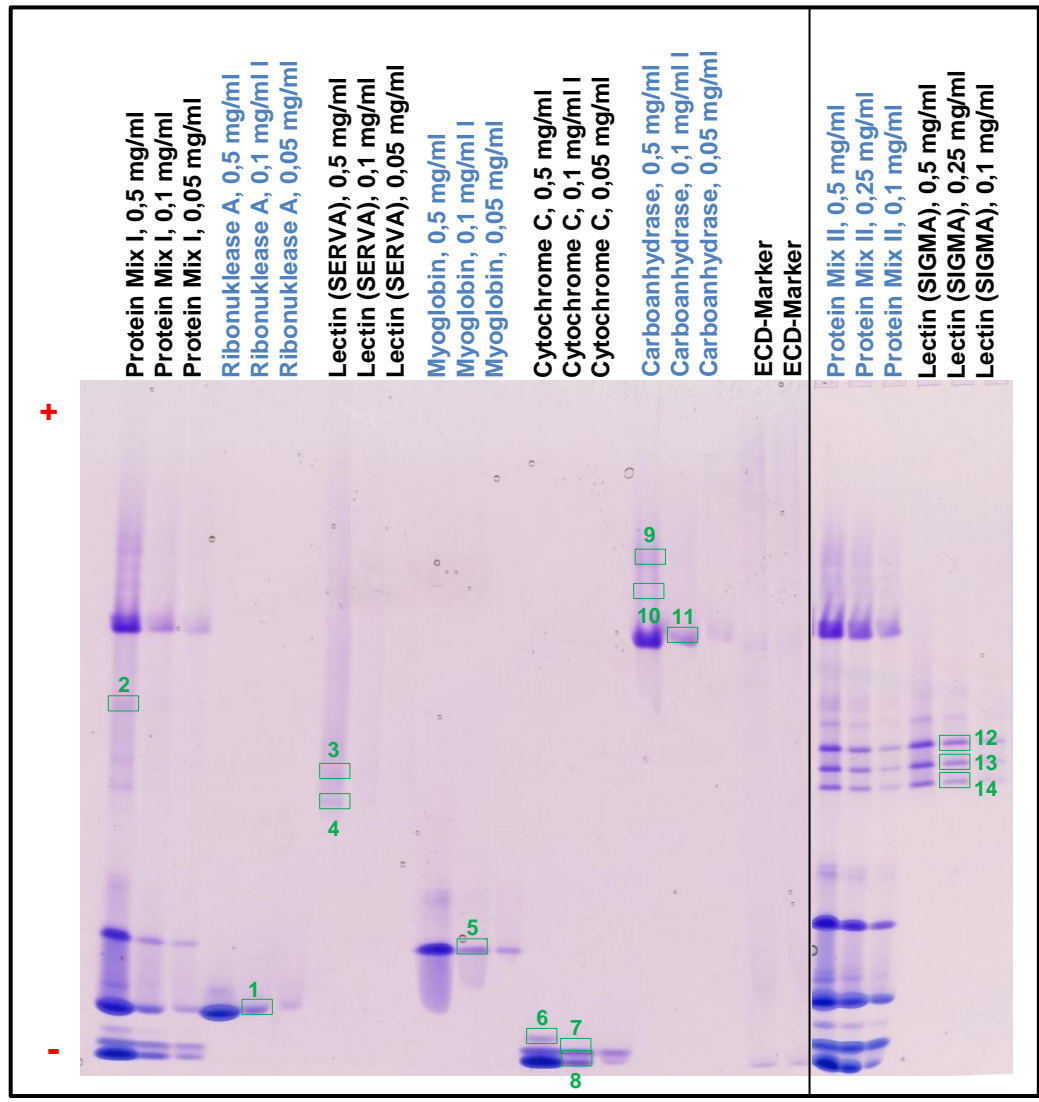
- Ribonuklease A (SERVA, 34388, bovine pancreas)
- Lectin (SIGMA, L9267, Lens culinaris)**
- Myoglobin (SERVA, 29895, equine)
- Cytochrome C (SIGMA, C3131, bovine heart)
- Carboanhydrase (SIGMA, C7025, bovine erythrocytes)

Empfehlung:

Protein Mix II mit 0,25 mg/ml Konzentration für jedes Protein

Kathodisch native Elektrophorese mit *Protein Buffer Kit Cathodic* von EDC (Electrophoresis Development & Consulting)

→ *In Gel Digest*



Cutting bands:

- 1) Ribonuklease A
- 2) Lectin (Serva) I
- 3) Lectin (Serva) II
- 4) Lectin (Serva) III
- 5) Myoglobin
- 6) Cytochrome C I
- 7) Cytochrome C II
- 8) Cytochrome C III
- 9) Carboanhydrase I
- 10) Carboanhydrase II
- 11) Carboanhydrase III
- 12) Lectin (Sigma) I
- 13) Lectin (Sigma) II
- 14) Lectin (Sigma) III

Kathodisch native Elektrophorese mit *Protein Buffer Kit Cathodic* von EDC (Electrophoresis Development & Consulting)

→ MS-Ergebnisse

Cutting band	Protein	MS-Ergebnis	Protein Identifikation Wahrscheinlichkeit
1	Ribonuklease A	Ribonuclease pancreatic OS=Bison bison GN=RNASE1 PE=1 SV=1	100%
2	Lectin (Serva) I	Concanavalin-A OS=Canavalia ensiformis PE=1 SV=2	100%
3	Lectin (Serva) II		
4	Lectin (Serva) III		
5	Myoglobin	Myoglobin OS=Equus burchelli GN=MB PE=1 SV=2	100%
		Myoglobin OS=Equus caballus GN=MB PE=1 SV=2	100%
6	Cytochrome C I	Cytochrome c OS=Bos taurus GN=CYCS PE=1 SV=2	100%
		Cytochrome c OS=Sus scrofa GN=CYCS PE=1 SV=2	100%
		Cytochrome c OS=Ovis aries GN=CYCS PE=1 SV=2	100%
7	Cytochrome C II	Cytochrome c OS=Bos taurus GN=CYCS PE=1 SV=2	100%
		Cytochrome c OS=Sus scrofa GN=CYCS PE=1 SV=2	100%
		Cytochrome c OS=Ovis aries GN=CYCS PE=1 SV=2	100%
8	Cytochrome C III	Cytochrome c OS=Bos taurus GN=CYCS PE=1 SV=2	100%
		Cytochrome c OS=Sus scrofa GN=CYCS PE=1 SV=2	100%
		Cytochrome c OS=Ovis aries GN=CYCS PE=1 SV=2	100%
9	Carboanhydrase I	Carbonic anhydrase 2 OS=Bos taurus GN=CA2 PE=1 SV=3	100%
10	Carboanhydrase II		
11	Carboanhydrase III		
12	Lectin (Sigma) I	Lectin OS=Lens culinaris subsp. culinaris PE=3 SV=2	100%
		Lectin OS=Lens culinaris PE=1 SV=2	100%
13	Lectin (Sigma) II	Lectin OS=Lens culinaris subsp. culinaris PE=3 SV=2	100%
		Lectin OS=Lens culinaris PE=1 SV=2	100%
14	Lectin (Sigma) III	Lectin OS=Lens culinaris subsp. culinaris PE=3 SV=2	100%
		Lectin OS=Lens culinaris PE=1 SV=2	100%